

ECONOMIC GROWTH

Yearly Change (Full year 2015 v 2016) Seasonally adjusted

GDP / GNP

+5.2% / +9.0%

+€12.7bn / +€17.4bn

PERSONAL CONSUMPTION	+2.9%	▲
GOVT. EXPENDITURE	+5.3%	▲
CAPITAL INVESTMENT	+37.6%	▲
EXPORTS	+2.4%	▲

Source: CSO - quarterly national accounts ([March 2017](#))

RETAIL SALES

(February 2017)

Seasonally adjusted - volume of sales change

ALL BUSINESSES

Year-on-year

+1.1%

Monthly

-0.5%

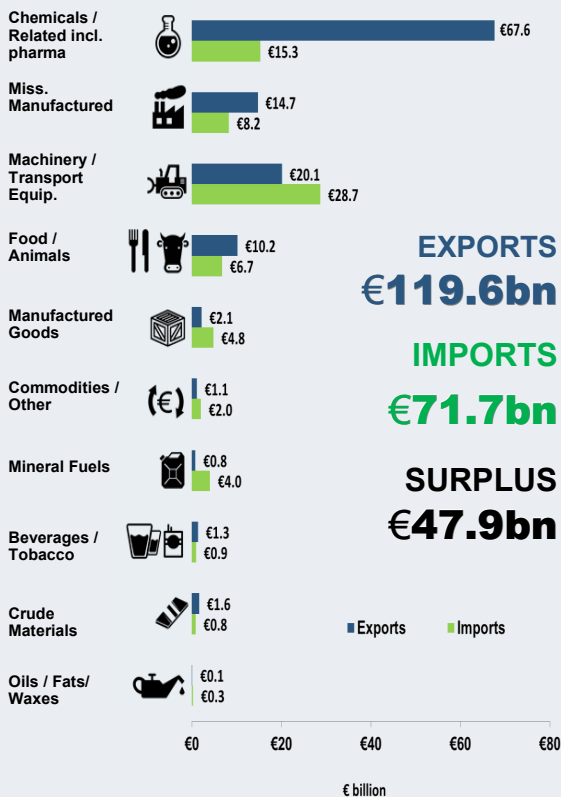
Main % changes —annual

Furniture & Lighting	+16.5	Clothing, footwear and textiles	+7.8
Other retail sales	+11.5	Electrical goods	+6.3
Hardware, paints & glass	+10.0	Motor Trades	-6.3

Source: CSO - retail sales index ([March 2017](#))

GOODS TRADE

(March 2016 — Feb. 2017)



MAIN MARKETS %

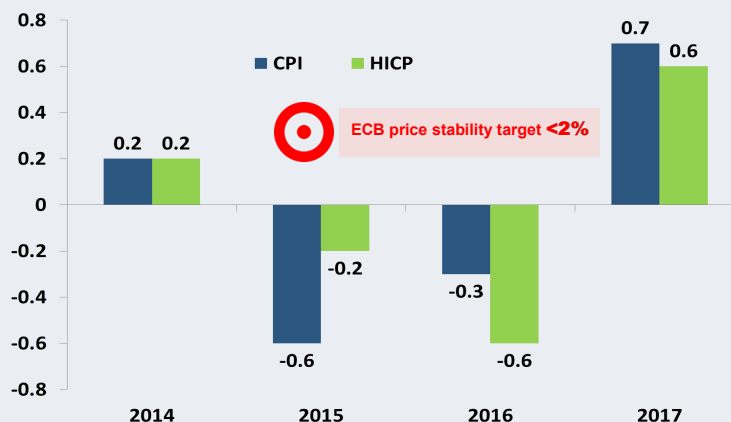


Source: CSO - external trade ([April 2017](#))

CONSUMER PRICES

(March 2017)

Year-on-year change

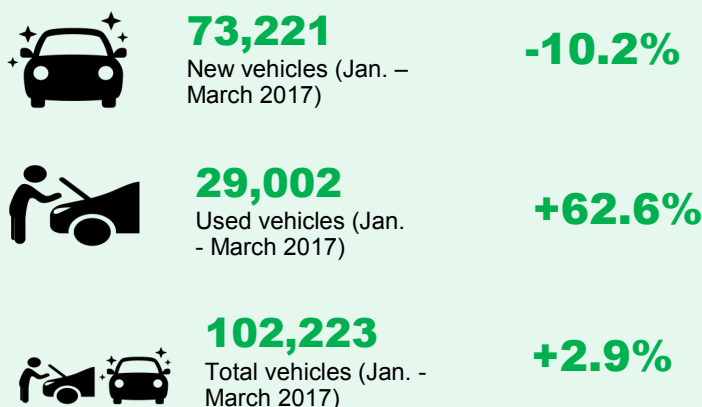


Source: CSO - consumer price index (CPI) ([April 2017](#))

VEHICLES LICENCED

(March 2017)

Change from same period last year



Source: CSO - vehicles licenced for the first time ([April 2017](#))



UNEMPLOYMENT (March 2017)

6.4%Monthly unemployment rate
(Seasonally adjusted)Down **1.9** percentage points
since March 2016**141,400**

Total persons unemployed

Down **39,800** people since March
2016**79,700**Persons unemployed 1 year
or more (Q4 2016)**3.6%**Long term unemployment
rate (Q4 2016)**83,500** (6.9%)
Males unemployed**57,900** (5.8%)
Females unemployedSource: CSO monthly unemployment ([April 2017](#)) and QNHS ([Q4 2016](#))

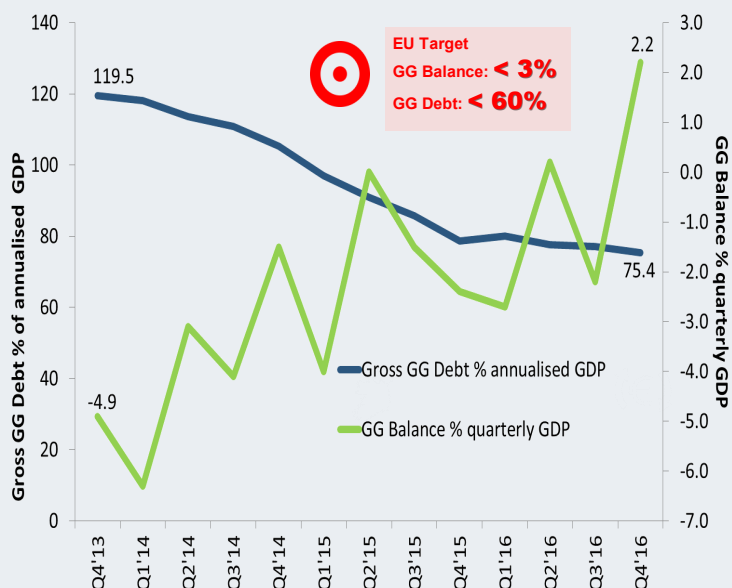
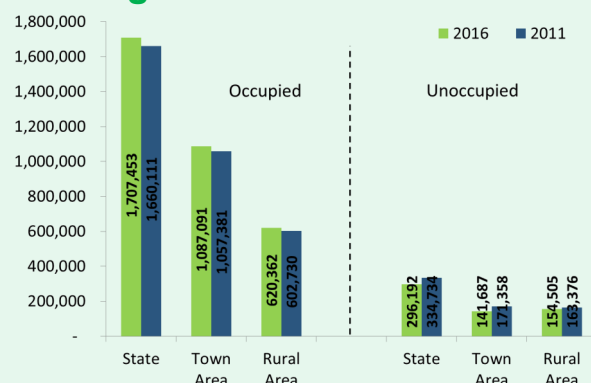
GOVERNMENT FINANCES

(Q4 2016)

General Govt. Balance and Gross Debt

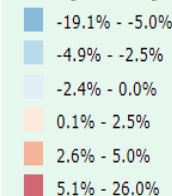
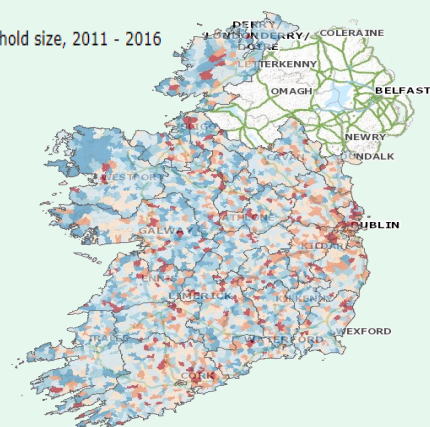
€billions	Q4 2012	Q4 2013	Q4 2014	Q4 2015	Q4 2016
GG balance	-2.4	-2.2	-0.8	-1.6	+1.6
GG Debt	210.0	215.3	203.4	201.4	200.6

GG Balance and Debt (% of GDP), Q4 2013- Q4 2016

Source: CSO Government Finance Statistics ([April 2017](#))Housing in Ireland (2016)
Housing Stock

Average Household Size, 2011-2016

% change in average household size, 2011 - 2016

Up from **2.73** to
2.75 persons
nationally

Dwellings Built*

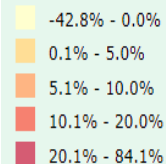
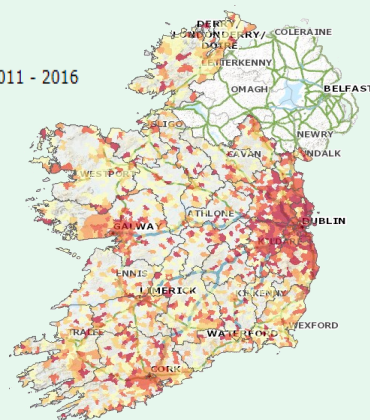


2011-2016	33,436
2001-2010	431,763

*Householders indicating when their dwelling was built

Renting Status

% change in average weekly rent, 2011 - 2016

**30%** of occupied
dwellings rented in 2016Source: CSO Census 2016 Profile 1 Housing in Ireland ([April 2017](#))