

## ECONOMIC GROWTH

Yearly Change (Q3 2016 v Q3 2017) Seasonally adjusted

### GDP / GNP

€75.2bn / €61.4bn

+10.4% / +11.0%

+€7.07bn / +€6.07bn

Source: CSO - national accounts [December 2017](#)

\*See [FAQs](#)

Personal Consumption +2.8%

Govt. Expenditure +2.2%

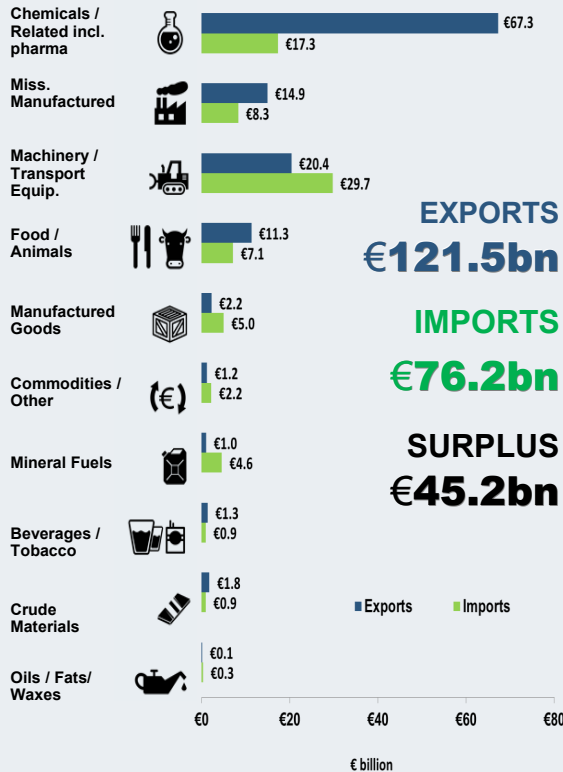
Capital Investment -44.0%

Exports +8.6%

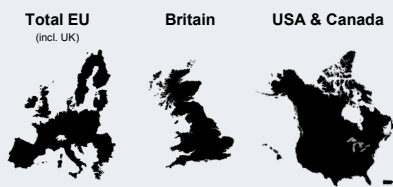
Imports -12.9%

## GOODS TRADE

(November 2016 — October 2017)



### MAIN MARKETS %



	Total EU (incl. UK)	Britain	USA & Canada
Exp.	51%	12%	28%
Imp.	59%	22%	21%

Source: CSO - external trade ([December 2017](#))

## RETAIL SALES

(October 2017)

Seasonally adjusted - volume of sales change

### ALL BUSINESSES

Year-on-year

**+4.5%**

Monthly

**+0.0%**

Main % changes —annual

Pharmaceuticals  
Medical & Cosmetic  
Articles +18.2%

Furniture & Lighting +14.6%

Other Retail Sales +6.5%

Hardware, Paints & Glass +6.1%

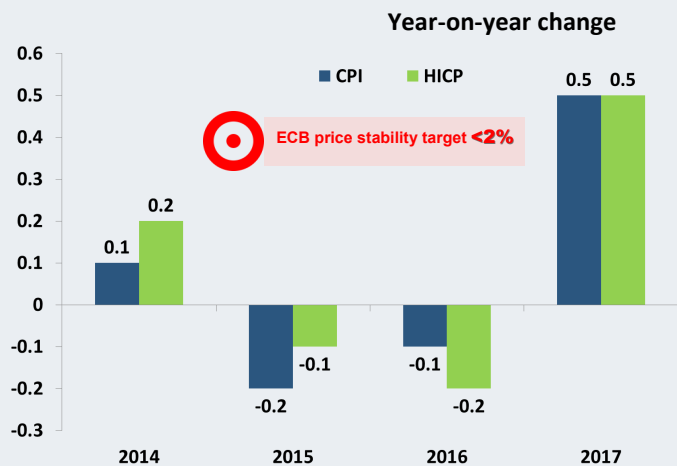
Non-specialised stores +5.0%

Electrical Goods +4.9%

Source: CSO - retail sales index ([November 2017](#))

## CONSUMER PRICES

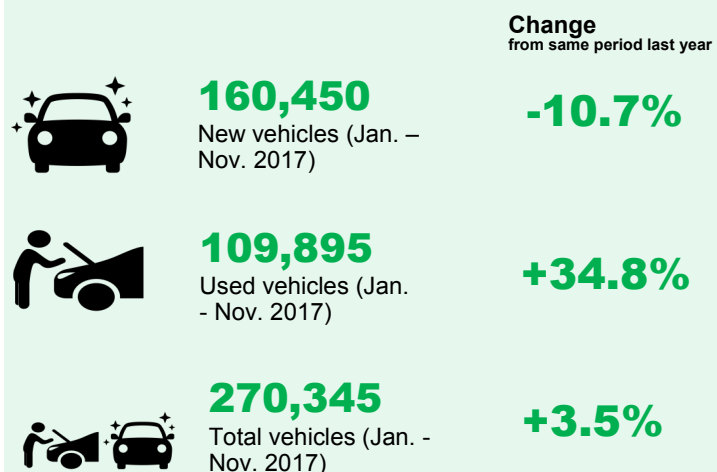
(November 2017)



Source: CSO - consumer price index (CPI) ([December 2017](#))

## VEHICLES LICENCED

(November 2017)



Source: CSO - vehicles licenced for the first time ([December 2017](#))



## UNEMPLOYMENT (November 2017)

**6.1%**

Monthly unemployment rate  
(Seasonally adjusted)

Down **1.4** percentage points  
since November 2016

**138,100**

Total persons unemployed

Down **29,000** people since  
November 2016

**68,900**

Persons unemployed 1 year  
or more (Q2 2017)

**3.1%**

Long term unemployment  
rate (Q2 2017)

**80,300** (6.7%)  
Males unemployed  
(October 2017)

**51,000** (5.1%)  
Females unemployed  
(October 2017)

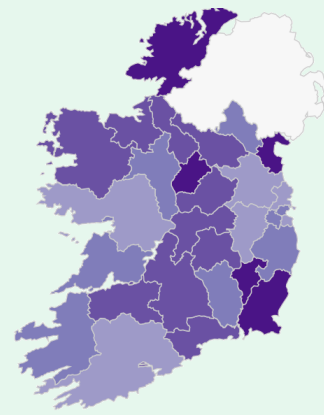
Source: CSO monthly unemployment ([December](#) & [November](#) 2017) and QNHS ([Q2 2017](#))

## EMPLOYMENT (April 2016)

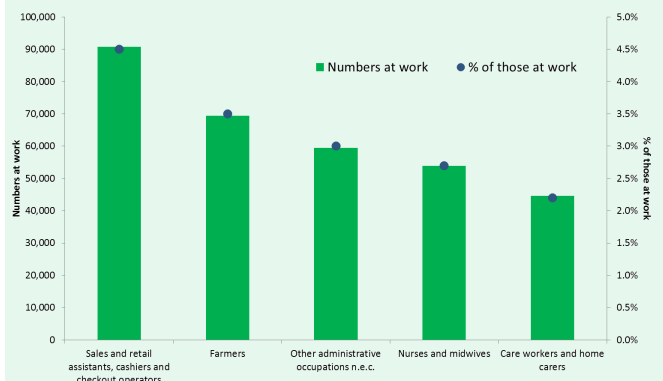
Persons aged 15 and over by economic  
status, 2011 — 2016

	2011	2016	Change (%)
Persons at work	1,807,360	2,006,641	+11.0%
Looking for first job	34,166	31,434	+8.0%
Unemployed	390,677	265,962	+31.9%
Labour Force	2,232,203	2,304,037	+3.2%
Not in Labour Force	1,376,459	1,451,276	+5.4%
Population aged 15 or over	3,608,662	3,755,313	+4.1%
Labour Force participation rate	61.9%	61.4%	
Unemployment rate	19.0%	12.9%	

### Unemployment rate by county



### Most common occupations (top 5)



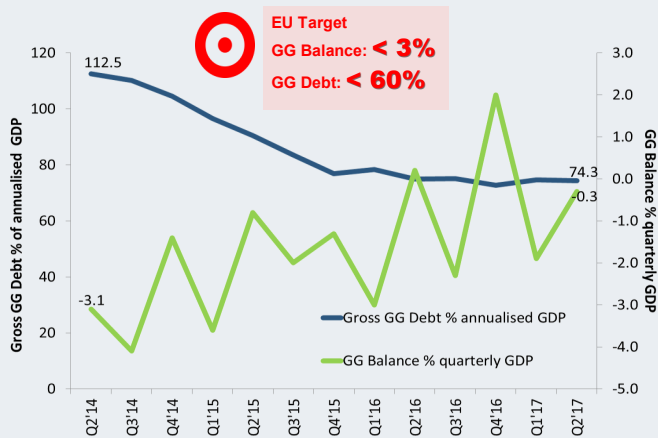
Source: CSO, [Census 2016 Profile 11—Employment, Occupations and Industry](#)

## GOVERNMENT FINANCES (Q2 2017)

### General Govt. Balance and Gross Debt

€billions	Q2 2013	Q2 2014	Q2 2015	Q2 2016	Q2 2017
GG balance	-1.9	-1.5	-0.5	0.2	-0.2
GG Debt	218.4	209.5	204.2	200.4	211.2

### GG Balance and Debt, Q2 2014 - Q2 2017



### Gross Debt as a percentage of Modified GNI

	2014	2015	2016
Modified GNI (€bn)	154.5	172.9	189.2
GG Debt (% of modified GNI)	132%	117%	106%

Source: CSO government finance statistics ([October](#) 2017)