

ECONOMIC GROWTH

Yearly Change (Full year 2015 v 2016) Seasonally adjusted

GDP / GNP

+5.2% / +9.0%

+€12.7bn / +€17.4bn

PERSONAL CONSUMPTION	+2.9%	▲
GOVT. EXPENDITURE	+5.3%	▲
CAPITAL INVESTMENT	+37.6%	▲
EXPORTS	+2.4%	▲

Source: CSO - quarterly national accounts ([March 2017](#))

RETAIL SALES

(February 2017)

Seasonally adjusted - volume of sales change

ALL BUSINESSES

Year-on-year

+1.1%

Monthly

-0.5%

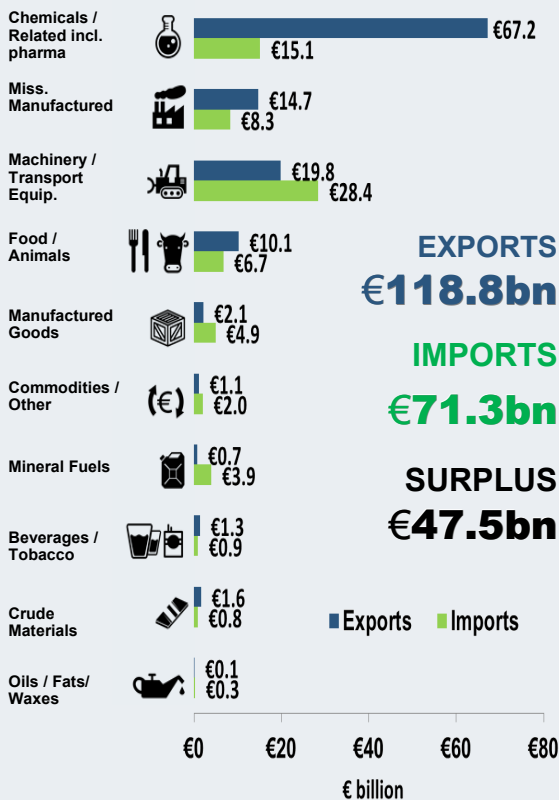
Main % changes —annual

Furniture & Lighting	+16.5	Clothing, footwear and textiles	+7.8
Other retail sales	+11.5	Electrical goods	+6.3
Hardware, paints & glass	+10.0	Motor Trades	-6.3

Source: CSO - retail sales index ([March 2017](#))

GOODS TRADE

(Feb. 2016 — Jan. 2017)



MAIN MARKETS %

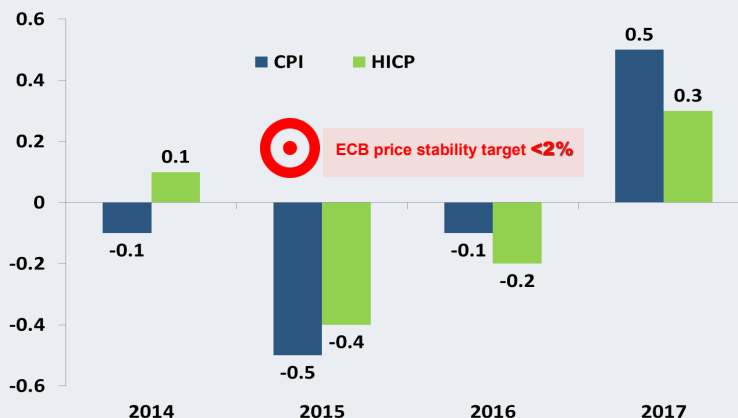


Source: CSO - external trade ([March 2017](#))

CONSUMER PRICES

(February 2017)

Year-on-year change

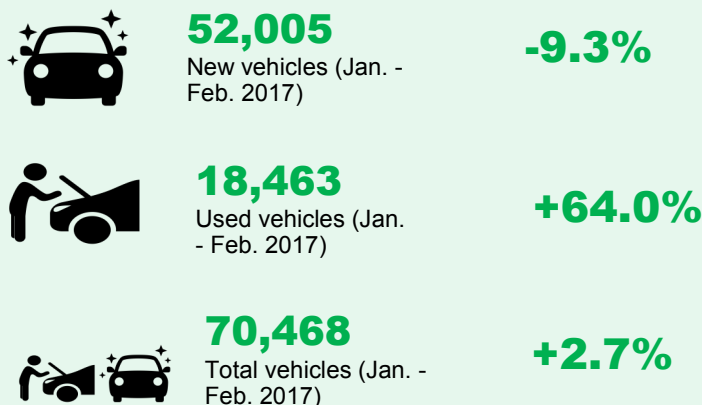


Source: CSO - consumer price index (CPI) ([March 2017](#))

VEHICLES LICENCED

(February 2017)

Change from same period last year



Source: CSO - vehicles licenced for the first time ([March 2017](#))



UNEMPLOYMENT (February 2017)

6.6%

Monthly unemployment rate
(Seasonally adjusted)

Down **1.8** percentage points
since February 2016

79,700

Persons unemployed 1 year
or more (Q4 2016)

3.6%

Long term unemployment
rate (Q4 2016)

145,100

Total persons unemployed

Down **36,200** people since February
2016



85,900 (7.1%)
Males unemployed



59,200 (5.9%)
Females unemployed

Source: CSO monthly unemployment ([February 2017](#)) and QNHS ([Q4 2016](#))

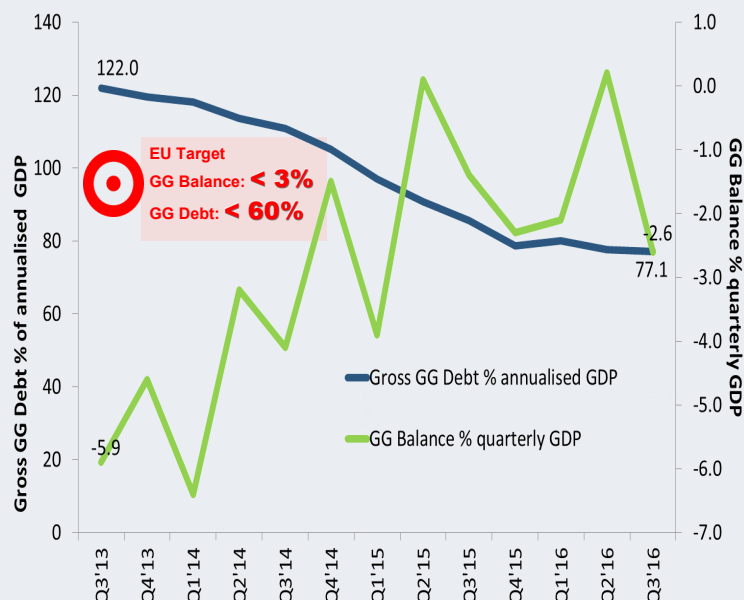
GOVERNMENT FINANCES

(Q3 2016)

General Govt. Balance and Gross Debt

€billions	Q3 2012	Q3 2013	Q3 2014	Q3 2015	Q3 2016
GG balance	-3.2	-2.8	-2.1	-0.9	-1.8
GG Debt	210.4	218.5	208.3	203.2	202.1

GG Balance and Debt (% of GDP), Q3 2013- Q3 2016



Source: CSO Government Finance Statistics ([January 2017](#))

Business in Ireland (2014)

	Enterprises	Turnover	Persons Employed
Industry	16,497	€127bn	210,545
Construction	47,349	€14bn	99,860
Distribution	45,618	€133bn	336,866
Services	122,191	€186bn	652,365
Finance & Insurance	6,594	€55bn	96,460
Total	238,249	€516bn	1,396,096



Enterprise Births = **14,343**



Enterprise Deaths = **15,177**

Gross Value Added* by Sector

Mining and quarrying	€0.5bn
Manufacturing	€36.9bn
Electricity, gas, etc.	€3.5bn
Water supply etc.	€0.4bn
Construction	€5.6bn
Motor trade	€0.8bn
Wholesale trade	€10.2bn
Retail trade	€7.0bn
Transportation & storage	€6.9bn
Accommodation & food	€3.9bn
Information & communication	€22.5bn
Real estate	€1.4bn
Professional, scientific etc.	€8.6bn
Administrative & support	€9.8bn
Other services	€2.0bn

* A measure of the value of goods and services

SMEs Account For:

- ⇒ **99.8%** of enterprises
- ⇒ **69%** of persons engaged
- ⇒ **50%** of GVA

Source: CSO Extracts from Business in Ireland 2014 ([March 2017](#))