

ECONOMIC GROWTH

Yearly Change (Q1 2015 v Q2 2016) Seasonally adjusted

GDP / GNP*

*See explanation of change in data [CSO press statement](#)

+4.3% / +4.4%

€62.3 / €51.6 billion

Personal consumption **+2.1%**

Govt. net spend **+5.0%**

Capital formation **+19.6%**

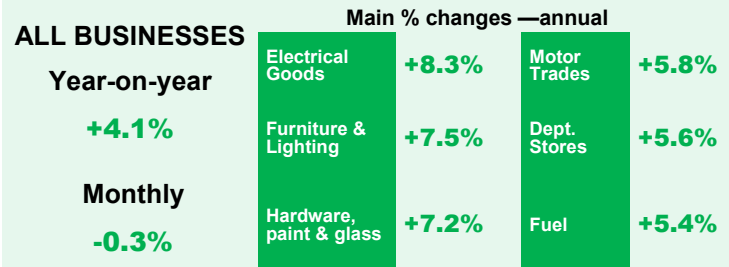
Exports **+4.4%**

Imports **+9.5%**

Source: CSO - quarterly national accounts ([September 2016](#))

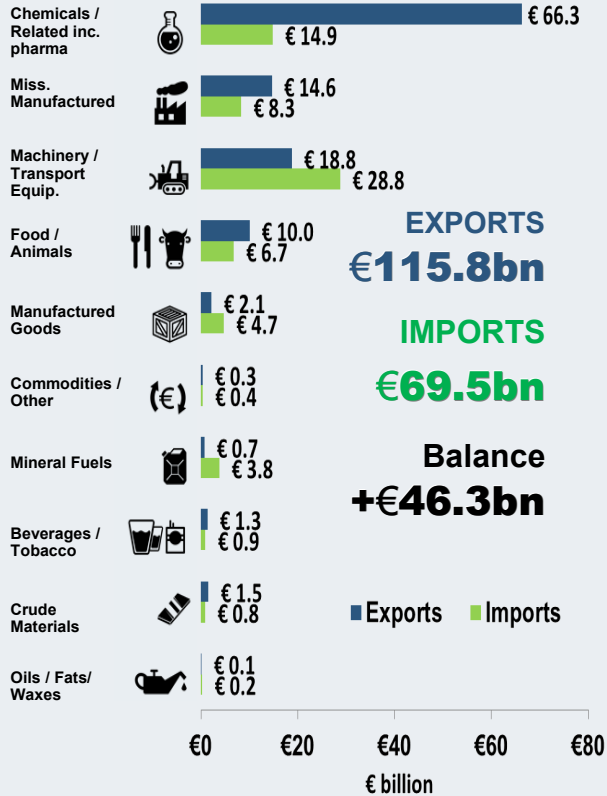
RETAIL SALES (October 2016)

Seasonally adjusted - volume of sales change

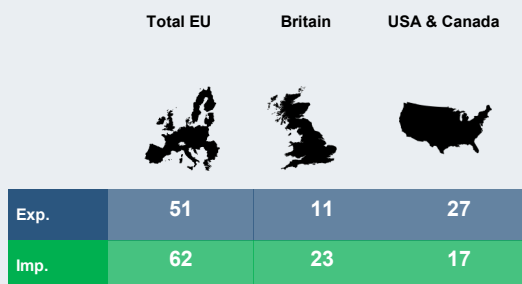


Source: CSO - retail sales index ([November 2016](#))

GOODS TRADE (Oct. 2015 — Sept. 2016)

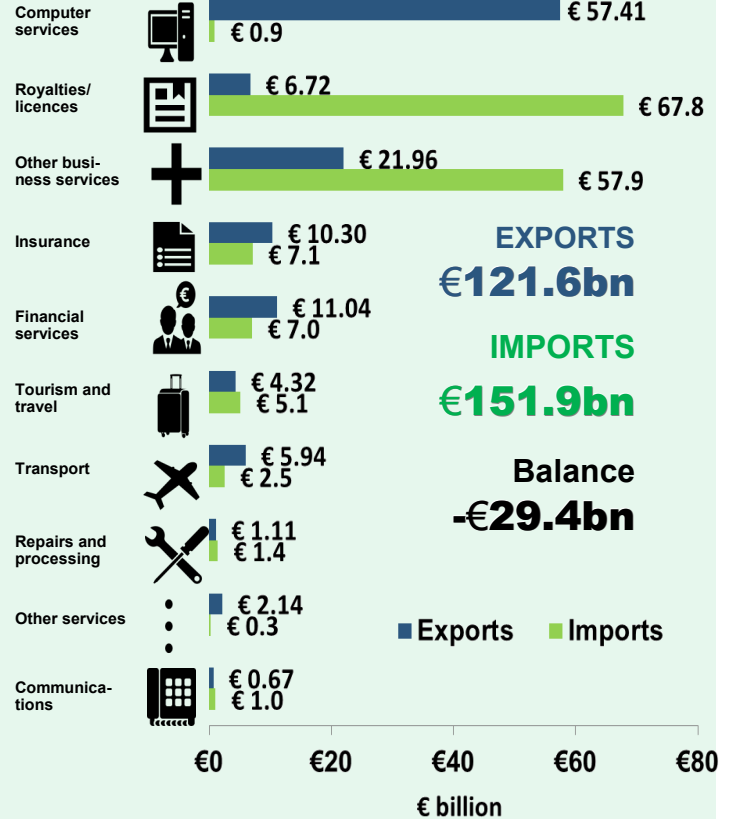


MAIN MARKETS %

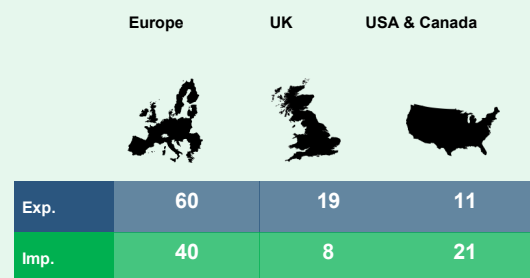


Source: CSO - external trade ([November 2016](#))

Services Trade (2015)



MAIN MARKETS %



Source: CSO - international trade in services ([November 2016](#))

UNEMPLOYMENT (November 2016)

7.3%

Unemployment rate
(Seasonally adjusted)

Down **1.8** percentage points since
November 2015

160,700

Total persons unemployed

Down **36,200** people since November
2015

Source: CSO monthly unemployment ([November 2016](#)) and QNHS ([Q3 2016](#))

92,300

Persons unemployed 1 year
or more (Q3 2016)

4.2%

Long term unemployment
rate (Q3 2016)

♂ 99,600 (8.3%)
Males unemployed

♀ 61,100 (6.1%)
Females unemployed

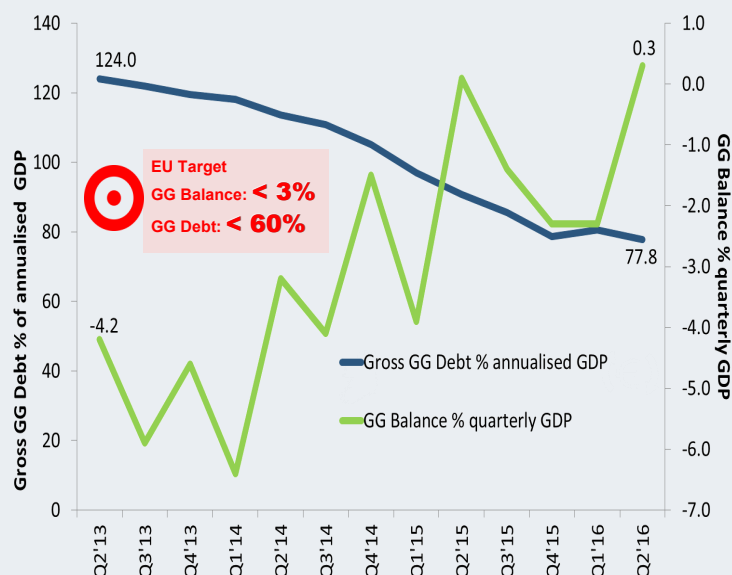
GOVERNMENT FINANCES

(Q2 2016)

General Govt. Balance and Gross Debt

€billions	Q2 2015	Q3 2015	Q4 2015	Q1 2016	Q2 2016
GG quarterly balance	+0.1	-0.9	-1.6	-1.4	+0.2
GG Annualised Debt	203.8	203.2	201.1	206.6	200.1

GG Balance and Debt (% of GDP), Q2 2013 - Q2 2016



Source: CSO Gov. Stats ([October 2016](#))

Housing

Source: CSO RPPI ([November 2016](#)), and

Annual change in prices

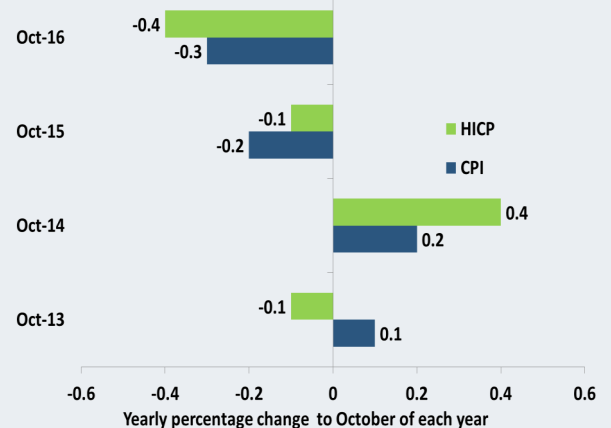
PRTB Rent Index ([Q3 2016](#))

Location	Residential Property (Sept. 2016)	Rent (Q3 2016)
National	+7.3%	+8.6%
Dublin	+5.4%	+7.1%
Outside Dublin	+11.0%	+9.7%

CONSUMER PRICES

(October 2016)

ECB price stability target <2%



Source: CSO - consumer price index (CPI) ([November 2016](#))

VEHICLES LICENCED (October 2016)

176,875

New vehicles
(Jan-Oct 2016)

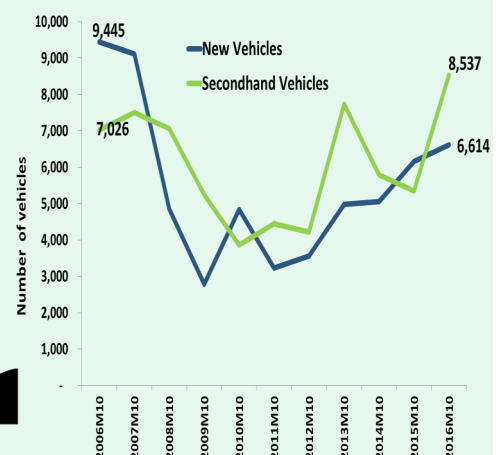


71,181

Used vehicles
(Jan-Oct 2016)



October 2006 - October 2016 (10 years)



Source: CSO - vehicles licenced for the first time ([Nov. 2016](#))