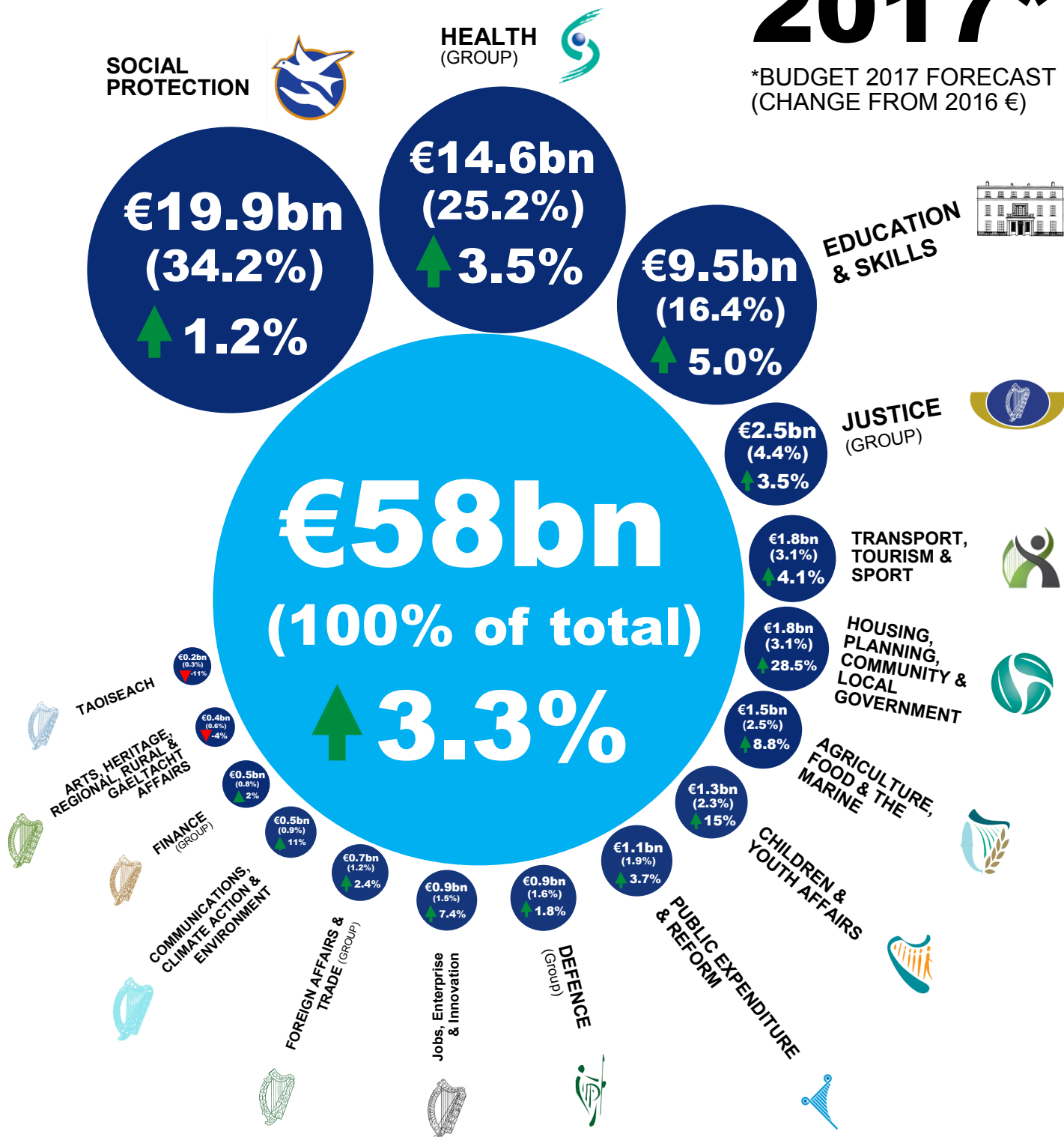


GOVERNMENT GROSS VOTED EXPENDITURE (CURRENT & CAPITAL CEILINGS)

2017*

*BUDGET 2017 FORECAST
(CHANGE FROM 2016 €)



Voted expenditure is expenditure voted on annually in the Dáil.

Non-voted expenditure is non-discretionary spend taken from the central fund.

(Note: The 2016 Revised Ceilings included a €220m allocation for the 2016 Christmas Bonus and year-end savings of €110m. There was also €200m in unallocated capital expenditure).